



MONTHLY MEMBERSHIP PROGRESS REPORT

District 14 C

Results as of: 05/31/2019

GMT: CINDY GREGG

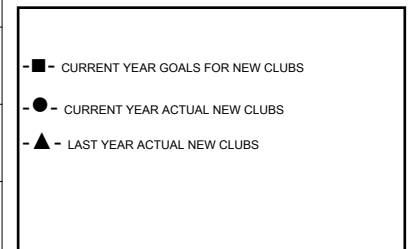
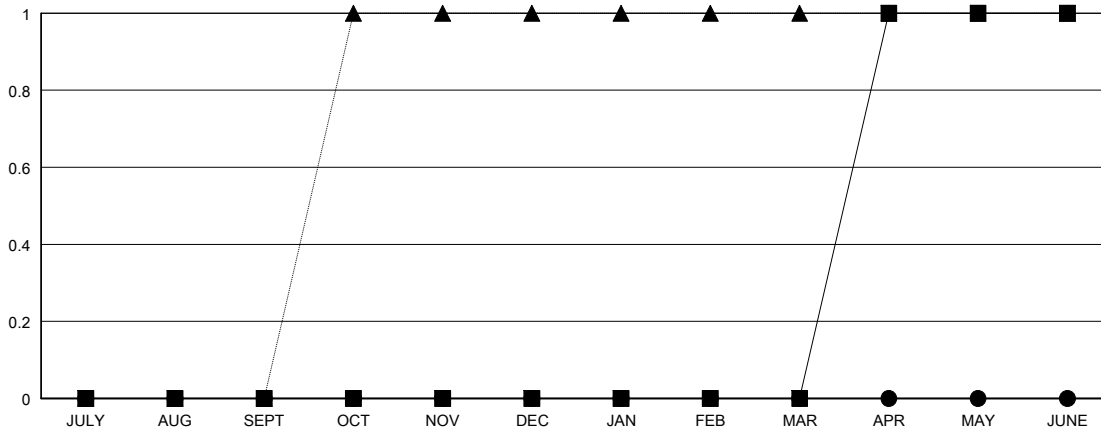
LOCATION PENNSYLVANIA

GMT CA

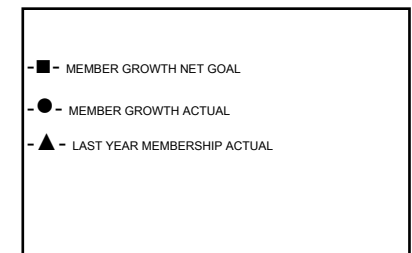
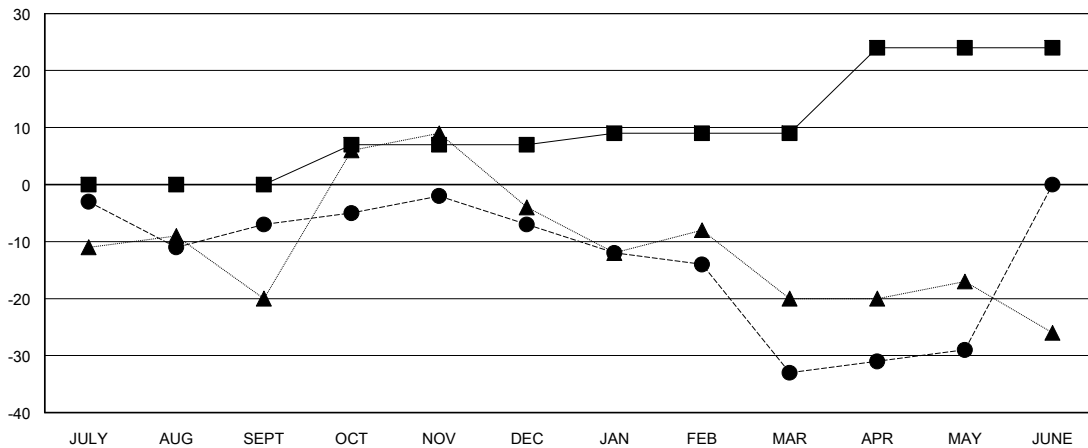
Clubs			
RESULTS FOR 2018-2019			
QUARTER	NEW CLUB GOAL	NEW CLUBS	DROPPED CLUBS
JULY/AUG/SEPT	0	0	0
OCT/NOV/DEC	0	0	0
JAN/FEB/MAR	0	0	2
APR/MAY/JUNE	1	0	0

Members			
RESULTS FOR 2018-2019			
QUARTER	MEMBER GROWTH NET GOAL	MEMBER GROWTH ACTUAL	DROPPED MEMBERS ACTUAL (including transfers)
JULY/AUG/SEPT	0	13	17
OCT/NOV/DEC	7	27	25
JAN/FEB/MAR	2	18	43
APR/MAY/JUNE	15	26	19

GOALS AND ACTUAL NEW CLUBS CUMULATIVE



GOALS AND ACTUAL MEMBERS CUMULATIVE



DROPPED CLUBS: 2

30 CLUBS OF 47 ADDED 1 OR MORE NEW MEMBERS

GENDER DISTRIBUTION	
MALE	998 (79.21%)
FEMALE	262 (20.79%)
Women Percentage Fiscal Year Goal: 19%	

DROPPED MEMBERS	
DECEASED	22
CLUB CANCELLED	17
OTHER	65
TOTAL	104

[CLICK HERE FOR CUMULATIVE MEMBERSHIP DATA](#)

TOTAL FAMILY UNIT MEMBERS	209
FAMILY MEMBERS PAYING HALF DUES	108